

'MOTHER' ERRORS

There are a significant number of errors in the postage stamp universe. The **nine errors** that are found on 'Mother' stamps are among the most interesting and iconic of them all, as depicted by their 'Offspring.'

'MOTHERS' and 'OFFSPRING': STAMPS AND THE STAMPS THAT DEPICT THEM

'MOTHER' ERRORS



• 'Offspring'
QU'AITI STATE - 1967

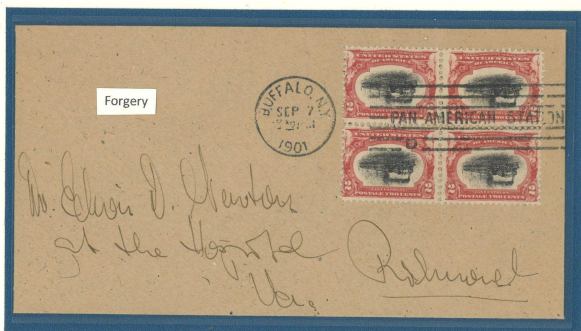
UNITED STATES - 1901



UNITED STATES - 1901
[FOR COMPARISON]



UNITED STATES - The Pan American Exposition Issue of 1901 included six stamps, three of which had errors involving an inverted center. The 2-cent stamp, showing the 'Empire State' Express train, was the only one of the three errors depicted on an 'Offspring.'
This copy is among the finest of that group of 64 single stamps known, per RASiegel records. *Certificate*



HUNGARY - 1921-25

HUNGARY - The 1921-25 issue (10 stamps) contained an image of a Madonna and Child. The only error in that series, and the most significant error in Hungarian philately, is the 5,000 kreuzer value with its center inverted. **Of the 100 such stamps issued, over 40 are held in museums. This is one of the finest of the remaining number in public hands.** *Certificate*



• 'Offspring'
HUNGARY - 1980



HUNGARY - 1921-25
[FOR COMPARISON]

SWITZERLAND - 1935

SWITZERLAND - In 1935, a stamp series was issued to change the values of an earlier series that commemorated the International Disarmament Conference in Geneva (1932). An error occurred in one sheet of 50 during the process of adding a 10 centimes charge to the original 15 centimes value. The inverted surcharge is one of the most significant errors in modern Swiss philately. **It is estimated that approximately two dozen are available outside museums.** *Certificate*



• 'Offspring'
PARAGUAY - 1979



SWITZERLAND - 1935
[FOR COMPARISON]