

SURCHARGES



• 'Offspring'
Cuba - 1955

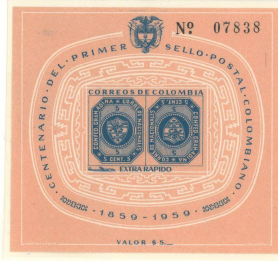


• 'Mother' Stamps
Cuba - 1855-56
(Both wide and narrow 'Y's are shown.
In both cases, the surcharge was used
for internal mail in the city of Havana)



• 'Offspring'
Cuba - 1980

TÊTE-BÊCHE



• 'Offspring'
Colombia - 1959



• A Very Elusive 'Mother'
Colombia - Grenadine Confederation
1859
(Middle stamp is tête-bêche)

SEMI-POSTALS



• 'Offspring'
Congo - 1979



• 'Mother'
France - 1917



France
Trial block

LOCALS



• 'Offspring'
Dominica - 1989



• 'Mother'
United States - 1861
(Wells, Fargo and Co. consolidated
its dominance of Western mails in
1861, and cut rates in half, including
this new \$2 for one-half ounce mail)

NEWSPAPER STAMPS



• 'Offspring'
Hungary - 1971



• 'Mother'
Hungary - 1871

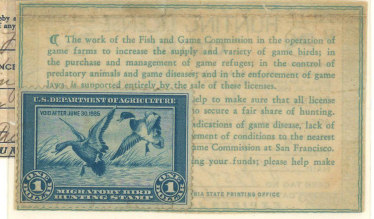
HUNTING PERMIT STAMPS



• 'Offspring'
United States - 1984



• 'Mother'
United States - 1934
(First Hunting Permit stamp)



SURCHARGES



• 'Offspring'
Cuba - 1955

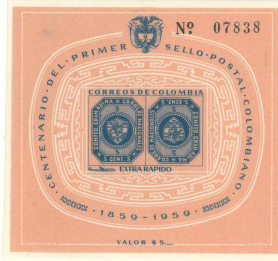


• 'Mother' Stamps
Cuba - 1855-56
(Both wide and narrow 'Y's are shown.
In both cases, the surcharge was used
for internal mail in the city of Havana)



• 'Offspring'
Cuba - 1980

TÊTE-BÊCHE



• 'Offspring'
Colombia - 1959



• A Very Elusive 'Mother'
Colombia - Grenadine Confederation
1859
(Middle stamp is tête-bêche)

SEMI-POSTALS



• 'Offspring'
Congo - 1979



• 'Mother'
France - 1917



France
Trial block

LOCALS



• 'Offspring'
Dominica - 1989



• 'Mother'
United States - 1861
(Wells, Fargo and Co. consolidated
its dominance of Western mails in
1861, and cut rates in half, including
this new \$2 for one-half ounce mail)

NEWSPAPER STAMPS



• 'Offspring'
Hungary - 1971



• 'Mother'
Hungary - 1871

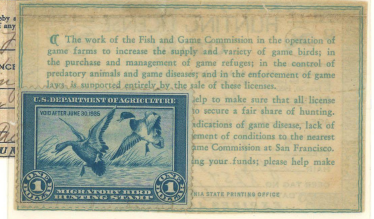
HUNTING PERMIT STAMPS



• 'Offspring'
United States - 1984



• 'Mother'
United States - 1934
(First Hunting Permit stamp)



• 'Offspring'
Haiti - 1969



• 'Mother'
Germany - 1936